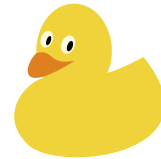


```
% A basic duck
\tikz\duck;
```



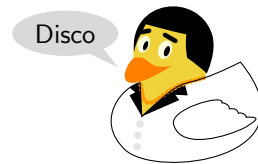
```
% An Overleaf duck!
\tikz\duck[overleaf];
```



```
\begin{tikzpicture}
%% Accessorise -- be smart!
\duck [tshirt=white, jacket=black, tie=black, tophat=black,
sunglasses=black, bill=orange];
\end{tikzpicture}
```



```
%% DISCO!!
\begin{tikzpicture}
\duck[eyebrow, mullet=black, jacket=white,
lapel=black, buttons=gray!20, bill=orange,
necklace=orange!80!yellow, speech={\footnotesize\sffamily
↪ Disco}
];
%% Sometimes you may need to draw extra paths
\path[draw]\duckpathjacket;
\path[draw,xshift=12pt,fill=white]\duckpathwing;
\end{tikzpicture}
```



```
\begin{tikzpicture}
\duck [body=pink!50!white,bill=orange,
unicorn=magenta!60!violet, longhair=magenta!60!violet,
signpost=\scalebox{0.45}{%
\parbox{4em}{\sffamily\bfseries\centering Dream!!}}
]
\end{tikzpicture}
```

